



## PRE-TRIP INFORMATION

# TABLE OF CONTENTS

	<i>Page</i>
TRAVELLING TO AND FROM YELLOWKNIFE .....	1
NEW UNITED STATES TRAVEL REQUIREMENTS .....	1
VISITING CANADA GUIDELINES .....	1
FLYING? AIRLINES – WHO TO FLY WITH .....	1
USING PETERSON'S POINT LAKE LODGE TO BOOK TRAVEL FROM EDMONTON TO YELLOWKNIFE .....	1
BAGGAGE .....	2
FIRST AIR.....	2
DRIVING .....	2
FISHING CHARTER OPTION .....	3
HOTELS .....	3
EDMONTON	
YELLOWKNIFE	
FLIGHT FROM YELLOWKNIFE TO PETERSON'S POINT LAKE LODGE .....	3
SAMPLE ITINERARY.....	4
FISHING POLICIES .....	5
TACKLE & GIFT SHOP .....	5
TIPPING .....	5
YOUR ACCOUNT .....	5
ALCOHOL .....	5
HEALTH & FITNESS .....	5
NO SMOKING .....	5
SPECIALTY BEVERAGES & ALCOHOL.....	5
BUGS .....	6
BUG PROTECTION	
REQUIRED FORMS .....	6
CHECK LIST.....	
.....	6
SUGGESTED ITEMS TO BRING .....	7



## PRE-TRIP INFORMATION

Peterson's Point Lake Lodge (The 'J' Group Ltd.)  
P.O. Box 447 Yellowknife, NT X1A 2N5, Canada  
Phone: (867) 920-4654 Email: [peter@ssimicro.com](mailto:peter@ssimicro.com)  
Web: [www.petersonspointlake.com](http://www.petersonspointlake.com)



### TRAVELLING TO AND FROM YELLOWKNIFE

Whether you will be driving or flying, please plan to arrive in Yellowknife a day or two before flying to the lodge. This will allow extra time to deal with unforeseen vehicle problems and the possibility of lost luggage and flight delays. Getting to Yellowknife a day before you fly to the lodge will also enable us to show you the many interesting sights of our city. **Be sure to book your trip as soon as possible. Airline seating may be limited due to summer/fall travelers.**

### NEW UNITED STATES TRAVEL REQUIREMENTS

As of January, 2007 a passport or other accepted travel document is required by US citizens returning by air to the United States. Check out the US department of state website at: <http://travel.state.gov> for details. Please ensure that you have all the necessary identification with you. This is of utmost importance to avoid the possibility of problems at departing airlines or Customs. A driver's license alone is not sufficient proof. If you do not have proper identification, travel may be refused!

### VISITING CANADA GUIDELINES

Most people assume without question that almost anyone can enter Canada. This is not true. Please take a moment to check out the Visiting Canada Guidelines at: <http://www.cbsa-asfc.gc.ca/publications/pub/bsf5082-eng.html> so you do not encounter any difficulties at the border.

### FLYING? AIRLINES – WHO TO FLY WITH

There are a number of daily flights to Yellowknife. All flights connect from Edmonton, Alberta's International Airport. Many airlines fly to Edmonton from major cities in southern Canada and the United States. **First Air**, Canadian North and Air Canada (Jazz) and Westjet offer daily jet service from Edmonton, Alberta to Yellowknife. **First Air is our preferred airline!** There are many benefits in booking with First Air, please see the details outlined on page 2. Please note that Air Canada Jazz and Westjet use smaller sized aircraft to fly from Edmonton to Yellowknife and baggage has a higher probability of being bumped on full flights.

### USING PETERSON'S POINT LAKE LODGE TO BOOK TRAVEL FROM EDMONTON TO YELLOWKNIFE

We can make flight reservations for you with **First Air** (our discounted price from Edmonton to Yellowknife is \$264.00 – no charge for ticketing fee). If you are making your own reservations to Edmonton and would like help with the Edmonton to Yellowknife portion of your trip do not hesitate to contact Amanda or Margaret by phone at (867) 920-4654 or via Email: [peter@ssimicro.com](mailto:peter@ssimicro.com) for First Air's schedule or you can check out their schedule on line at [www.firstair.ca](http://www.firstair.ca)



**PRE-TRIP INFORMATION**

Peterson's Point Lake Lodge (The 'J' Group Ltd.)  
P.O. Box 447 Yellowknife, NT X1A 2N5, Canada  
Phone: (867) 920-4654 Email: [peterston@ssimicro.com](mailto:peterston@ssimicro.com)  
Web: [www.petersonspointlake.com](http://www.petersonspointlake.com)



**BAGGAGE**

Travel baggage policies vary from airline to airline, each seem to have different weight allowances, excess baggage, and maximum bag sizes and associated charges. Please check with your travel agent and/or airlines regarding their specifications. As previously mentioned we work closely with First Air – your Edmonton to Yellowknife connection. They not only have special rates but also allow hunting & fishing guests to check an extra piece of baggage, details are provided below for your reference.

- **First Air:** First Air allows each ticketed passenger are allowed to check two pieces of baggage at a maximum of 32 kgs/70 lbs per piece on jet flights. Maximum carry-on weight is 20 lbs.
- A maximum of three additional pieces can be accepted at check-in, subject to \$50.00/per piece excess charges and space availability.



Additional charges will apply for:

- OVERWEIGHT LUGGAGE (71- 99 lbs)      \$ 50.00/piece
- OVERSIZED LUGGAGE -                              \$70.00/piece

Please note: luggage weighing 100lbs and over will not be accepted. For further information: [www.firstair.ca](http://www.firstair.ca)

**DRIVING**

If you are driving to Yellowknife, please allow extra time for mechanical problems that may arise. The Mackenzie Highway (HWY #3) from Edmonton to Yellowknife is paved all the way to Yellowknife call NWT Tourism for road touring information (1-800-661-0788) or check online at: <http://www.spectacularnwt.com> Please contact us upon your arrival in Yellowknife at: 867-920-4654 (o) or 867-445-8797 (c). **Please note:** You can leave your vehicle at our home while on your trip.

**FISHING CHARTER OPTION ON GREAT SLAVE LAKE**

If you arrive in Yellowknife a day early you may want to consider fishing for great northern pike, arctic grayling & whitefish. We are working with a two different companies in Yellowknife that operate charter companies on Great Slave Lake, their price per person is approximately \$125 for a half day and approx. \$350.00 for a full day fishing charter with shore lunch. Fishing equipment is supplied. If you are interested, let us know so we can make arrangements for your excursion. Advance booking is highly recommended.



**PRE-TRIP INFORMATION**

Peterson's Point Lake Lodge (The 'J' Group Ltd.)  
P.O. Box 447 Yellowknife, NT X1A 2N5, Canada  
Phone: (867) 920-4654 Email: [peterson@ssimicro.com](mailto:peterson@ssimicro.com)  
Web: [www.petersonspointlake.com](http://www.petersonspointlake.com)



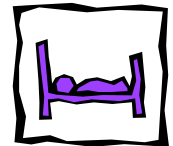
**HOTELS**

In order to ensure you our preferred rate, we will make your hotel reservation for you in Edmonton & Yellowknife, please complete the downloadable [flight itinerary & hotel reservation form](#) from our website and return it to our office by mail or fax.

**Edmonton - Holiday Inn Express**

The Holiday Inn Express in Edmonton is our preferred hotel of choice for a number of reasons.

- Is only 2 minutes away from the Edmonton International Airport
- Has free airport shuttle service while on your hunt
- Offers free Continental Breakfast
- Special rate approximately: \$129.00 (+ taxes) for standard room (room with two queen size beds)



**Yellowknife – The Yellowknife Inn**

The Yellowknife Inn is conveniently located in the centre of downtown Yellowknife, just a ten minute shuttle ride from the Yellowknife Airport. This city centre location is within a few short blocks of many territorial offices including the Legislative Assembly of the Northwest Territories. The Yellowknife Inn is one of the few Yellowknife hotels conveniently located near the Yellowknife Airport and many historic attractions. The Yellowknife Inn features 129 recently renovated guestrooms, all with complimentary high-speed internet access and many features to make your stay a productive and enjoyable one. [L'atitudes Restaurant](#) and [Mackenzie's Lounge](#) feature both local flavours and traditional fare to complement your stay while in Yellowknife. The shops of the [Centre Square Mall](#) are conveniently accessible from the hotel lobby. <http://www.yellowknifeinn.com>

Rate: \$125.99 (+ taxes) for standard room (room with two queen size beds)

**YOUR FLIGHT FROM YELLOWKNIFE TO PETERSON'S POINT LAKE LODGE**

Your flight from Yellowknife to the lodge will be on a charter float plane. The estimated flight time is one hour and thirty minutes. Because of weight restrictions you are allowed a maximum baggage weight for personal items of 60 lbs.





## PRE-TRIP INFORMATION

Peterson's Point Lake Lodge (The 'J' Group Ltd.)  
P.O. Box 447 Yellowknife, NT X1A 2N5, Canada  
Phone: (867) 920-4654 Email: [peterson@ssimicro.com](mailto:peterson@ssimicro.com)  
Web: [www.petersonspointlake.com](http://www.petersonspointlake.com)



### SAMPLE ITINERARY (EXAMPLE 5 DAY TRIP)

#### **Day 0: Arrival in Yellowknife**

You will be picked up at the Yellowknife airport by our friendly staff and taken to the hotel. Based on your arrival date and time in Yellowknife, we can provide you with a tour of the city and point out the sites, such as the Prince of Wales Northern Heritage Centre (Yellowknife's museum), the Wildcat Café and Pilots Monument. We can also provide details on Yellowknife events and offer assistance organizing day fishing charters and/or tours of Yellowknife.

#### **Day 1**

Peterson's staff will pick you up at the hotel early morning (7:00 am) and will take you to the Air Tindi float base for your flight the lodge. At the float base, we celebrate your adventure with homemade bannock and preserves, accompanied with a cheese and fruit platter. A toast to your trip with sparkling wine and orange juice while overlooking Great Slave Lake sets the tone before you board the plane for your one hour and twenty minute flight north. Upon arrival you will be greeted by our friendly staff. You will then be assigned your cabin where you can get unpacked and settle into your room. Afterward there is a brief orientation to the lodge where you will meet the Peterson Team and become acquainted with the lodge. Our staff will be happy to answer any questions you may have. After lunch, you will head out on the lake for your first day of fishing.

#### **Day 2/Day 3/Day 4**

The next three days will be spent fishing for trophy lakers, eating great food and enjoying the camaraderie of other anglers & staff.

#### **A typical day at Peterson's Point Lake Lodge**

You can expect to begin your day with a nourishing breakfast. Our cook will have an assortment of choices including fresh coffee, tea, juice, muffins, toast and fruit preserves, Red River cereal and main course, be it eggs, pancakes or French toast. Breakfast is a great time to discuss the days' activities; anglers & guides can plan lunch whether they prefer to take a packed lunch or stop for a shore lunch and talk about fishing locations. It is easy to follow along on the Point Lake map hung on the lodge wall. Each day at Point Lake is unique, as insects, weather and fishing action will influence the day's activities. Anglers often depart for a day of fishing at 8:00 AM. Lunch can be a prepared picnic or sumptuous shore lunch. Dinner is served at 7:00 PM in the main lodge.

#### **Day 5**

On your last day, you will depart for Yellowknife at approximately 9:30 am. Arriving at approximately 11:00 am, you will be met at the float base and after loading your gear you will be driven to the airport or hotel to check-in. There will be time for lunch at one of the local restaurants as well as gift/souvenir shopping. We do our utmost to stay within the scheduled times however there is the possibility of delays due uncontrollable factors such as inclement weather.



**PRE-TRIP INFORMATION**

Peterson's Point Lake Lodge (The 'J' Group Ltd.)  
P.O. Box 447 Yellowknife, NT X1A 2N5, Canada  
Phone: (867) 920-4654 Email: [peterson@ssimicro.com](mailto:peterson@ssimicro.com)  
Web: [www.petersonspointlake.com](http://www.petersonspointlake.com)



**FISHING POLICIES**

For years we have operated on with a *barbless hooks and catch and release* policy. Barbless hooks permit easier removal of the hook, minimizing damage to the fish and reducing handling time resulting in increasing the chances of survival for released fish. In 2006, the Government of the Northwest Territories changed the sport fishing regulations to make the use of barbless hooks mandatory in the Northwest Territories. Guests can either purchase barbless hooks or convert barbed hooks by crimping or filing the barbs down.

*Catch and release:* All fish are returned to the waters to be caught again. Of course we make exceptions with those unforgettable shore lunches and our northern dinners.

**TACKLE & GIFT SHOP**

For your convenience our lodge tackle shop has a small assortment of lures as well as cisco's and herring rigs, available for sale. Peterson's Point Lake Lodge shirts, caps and unique gift items are also available for sale. We do not accept credit cards. Cash or cheques only.

**TIPPING**

In the past, many of our guests have been unsure of the tipping procedure for your PPLL Guides and the lodge cook. We feel that somewhere approximately \$25.00 per day per person for your guide is a good range; the cook's tips average \$15.00 – \$20.00 per day per person. We feel strongly that tips are for good service and for the special attention to your personal needs. You can check out our guides profiles on our website at [www.petersonspointlake.com/guideprofiles.html](http://www.petersonspointlake.com/guideprofiles.html).

**YOUR ACCOUNT**

***Your account must be paid in full on June 1<sup>st</sup>.*** If there are any discrepancies on your statement please let us know as soon as possible. Statements will be mailed out each time you send a payment. Accounts may be paid by personal or certified cheque.

**HEALTH & FITNESS:** Please let us know if you have any dietary or health problems.



**No SMOKING:** For the consideration of all of our guests, ***all of our dining and living facilities are designated as non-smoking.***

**SPECIALTY BEVERAGES & ALCOHOL**

If you would like pop or specialty beverages please contact with your request so we can make arrangement to have it available for your trip. Please note that to ensure the comfort and safety of all guests' intoxication is not permitted while at the lodge. We do not sell alcohol at the lodge, however you may bring a personal supply for a sociable drink while on your trip or make a request so that we can purchase these items for you. If you are travelling internationally, we suggest that you purchase your alcoholic beverages at duty free shop.

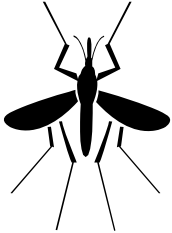


## PRE-TRIP INFORMATION

Peterson's Point Lake Lodge (The 'J' Group Ltd.)  
P.O. Box 447 Yellowknife, NT X1A 2N5, Canada  
Phone: (867) 920-4654 Email: [peterston@ssimicro.com](mailto:peterston@ssimicro.com)  
Web: [www.petersonspointlake.com](http://www.petersonspointlake.com)



### BUGS



Yes they do exist! Weather, wind conditions and amount of snowfall affect the concentrations of biting insects in the barrens. Black flies, mosquitoes and horseflies are common. Black flies are one of the most annoying and serious pests affecting the NWT. You may not be aware of a black fly bite until you notice a small reddish bump on your skin. Bites are commonly found behind your ears, neck, belt line and lower legs/arms. Scratching should be avoided as it can cause skin infections. Mosquito bites can cause irritation, this can be minimized if you avoid scratching or rubbing the site; it will subside quicker if left alone.

**Bug Protection:** You may need to take precautions while on the barrens by wearing light coloured clothing; using insect repellents and by avoiding perfumes/aftershave products. You may want to use a bug jacket and/or head net (we have some available at the lodge for your use). The itching from bug bites may be alleviated with Calamine or after-bite lotion.

### REQUIRED FORMS – AVAILABLE ON OUR WEBSITE

1. [FLIGHT ITINERARY & HOTEL RESERVATION FORM](#) Please complete and fax or mail this form as soon as your travel plans are confirmed. This allows us to arrange your hotel and ground transportation.
2. [FISHING REGISTRATION FORM](#) Please complete and return. We require this form for your contact, health, safety and emergency information.
3. [WAIVER](#) Please complete and return.

### CHECK LIST

- Complete & send fishing registration form
- Complete & send waiver
- Check passport expiry date
- Make travel arrangements/Reserve flights/plan driving route.
- Double check flight itinerary
- Fax or mail flight itinerary & hotel reservation form
- Send final payment to PPLL office (**deadline June 1<sup>st</sup>**)



## PRE-TRIP INFORMATION

Peterson's Point Lake Lodge (The 'J' Group Ltd.)  
P.O. Box 447 Yellowknife, NT X1A 2N5, Canada  
Phone: (867) 920-4654 Email: [peterston@ssimicro.com](mailto:peterston@ssimicro.com)  
Web: [www.petersonspointlake.com](http://www.petersonspointlake.com)



---

### **SUGGESTED ITEMS TO BRING**

#### **EQUIPMENT & TACKLE:**

**Rod:** 1- 7' - 8' heavy action spinning rod

**Reels:** Spinning or level wind

#### **Lures:**

- Husky Devils: 5" five of diamonds: chartreuse, rainbow/silver, red/white
- T-60 flatfish: yellow with black dots, chartreuse, silver
- Crocodile 6" silver
- Big doctor spoons
- Believers 10-12" skunk, jailbird, firetiger, frog
- Ruby eye wiggler (brass/silver) 4"

#### **Line:**

- Minimum of 25 lb test monofilament with a minimum of 200 yards.

#### **Leaders:**

- Steel 24" - 36" black 60 lb test

#### **Weights:**

- Keel or banana – 3oz, cross lock snaps/swivels

#### **PERSONAL ITEMS:**

- Pants/long-sleeved shirts, socks
- Rain suit: pants & jacket
- T-shirt/vest
- Gloves
- Sweater/Down vest
- Warm waterproof boots
- Personal toiletries: including towel
- Sun Screen/Glasses
- Hat
- Camera and film
- Bug repellent: Deep woods off/Muskol
- Shorts/Swimsuit
- Slippers

**Note:** Our tackle & gift shop carries ciscoes and herring rigs as well as a small assortment of lures for your convenience. Trolling rods and reels are available for use upon request.